



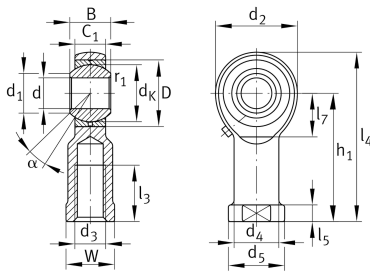
GIKL12-PB-A

Rod end

Schaeffler ID:
0066348500000

Rod end with internal thread, left hand thread, requiring maintenance, DIN ISO 12240-4. dimension series K, type F, open design

Technical information



Main Dimensions & Performance Data

d	12 mm	Bore diameter bearing
D	26 mm	Outside diameter bearing
B	16 mm	Width inner ring
C _r	13,300 N	Basic dynamic load rating, radial
C _{0r}	20,800 N	Basic static load rating, radial
G _r	0 - 0,035 mm	Radial Clearance
	0.127 kg	Weight

Dimensions

d _K	22.225 mm	Ball diameter
d ₁	15.4 mm	Outer flange diameter inner ring
d ₂	32 mm	Outer eye diameter
d ₃	M12	Thread size
d ₄	17.5 mm	Shank diameter
h ₁	50 mm	Shank Length Internal thread head
α	13 °	Tilt angle
l ₃	22 mm	Thread length Internal thread
l ₄	66 mm	Total length internal thread head
l ₅	6.5 mm	length rod end shank
l ₇	17 mm	Distance drilling with/shaft start
d ₅	22 mm	Shank diameter, large
C ₁	12 mm	Width of the rod end
r _{1smin}	0.3 mm	Edge Spacing
W	19 mm	Width Across Flat
d _{OT}	0.018 mm	Bore diameter bearing, upper tolerance
d _{UT}	0 mm	Bore diameter bearing, lower tolerance
d _T	H7 mm	Bore diameter bearing, tolerance
B _{OT}	0 mm	Width inner ring, upper tolerance
B _{UT}	-0.12 mm	Width inner ring, lower tolerance

Temperature range

T _{min}	-50 °C	Operating temperature min.
T _{max}	200 °C	Operating temperature max.